

2030 ~ 300 GW



# Role of the private sector and civil society in regulating the energy transition and promoting private investment in RE projects in Africa

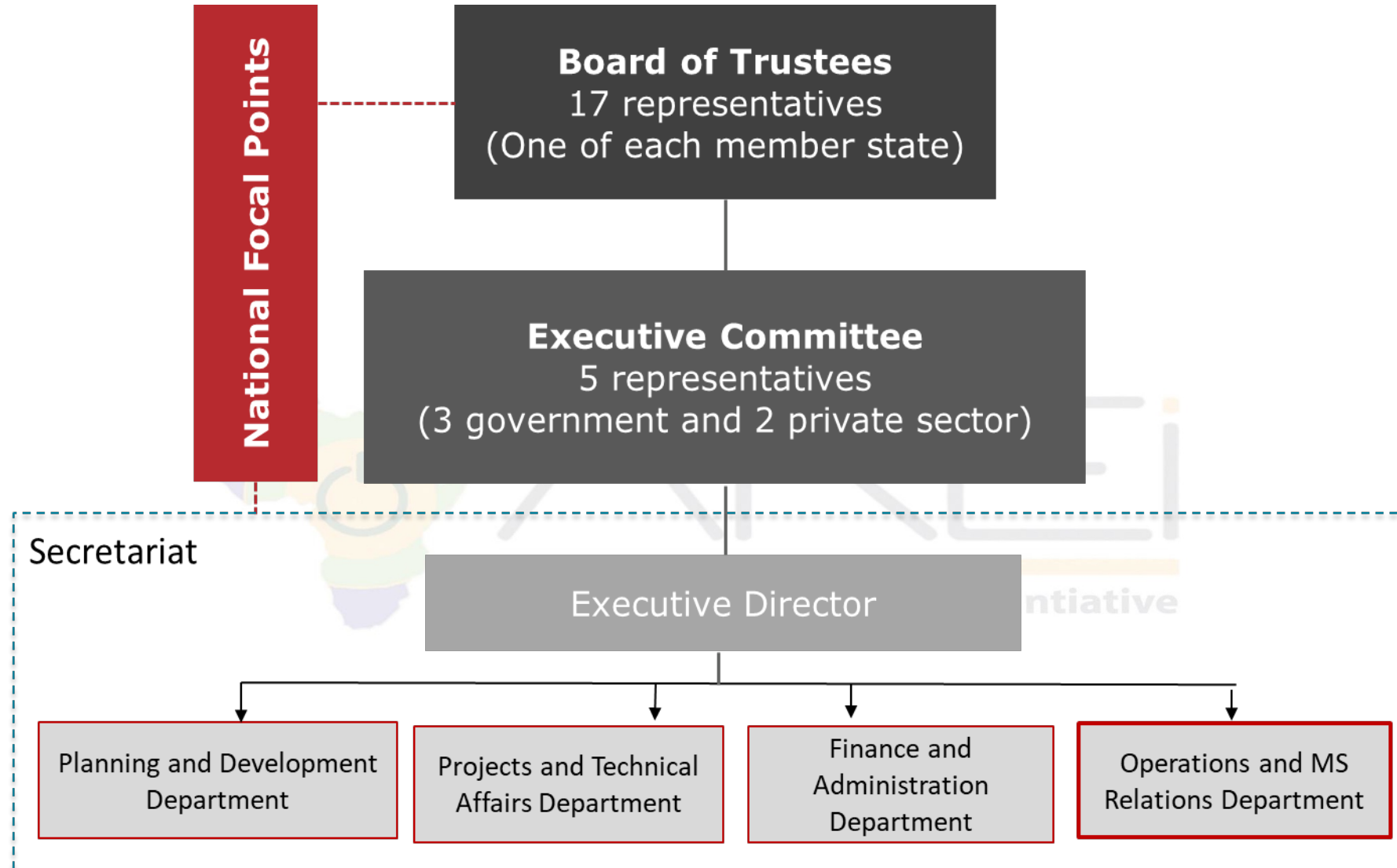
Casablanca, March 7-8, 2023



## Introduction

The Regional Center for Renewable Energy and Energy Efficiency (RCREEE) is an intergovernmental organization with diplomatic status that aims to enable and increase the adoption of renewable energy and energy efficiency practices in the MENA region.

RCREEE teams-up with governments, international organizations, IFIs and Private Sector via several forms of partnerships to initiate and lead clean energy policy dialogues, strategies, technologies, managing the facilitation of RE investment platforms and capacity development in order to increase the regional share of tomorrow's modern energy solutions.



## RCREEE is...



**Intergovernmental Organization with 17 Member States**



**The technical arm of the League of Arab States**



**Leader in clean energy policy dialogues, strategies, technologies, capacity development, investment and project support**



**The first regional renewable energy and energy efficiency centers across the world**



**Secretariat in Cairo, Egypt with regional antennas and a pool of short-term experts**

## The Working Areas of RCREEE

### **Policy Reform and Support**

Action Plans for Sustainable Energy

Legal Framework Support

### **Standardization & Certification**

Products Certification

Personnel Certification

### **Environment and Climate Change**

Climate Change

Environmental and social Impact Assessment

### **Knowledge Management**

Online platform

Capacity Building

### **Private Sector Promotion**

Market Assessment

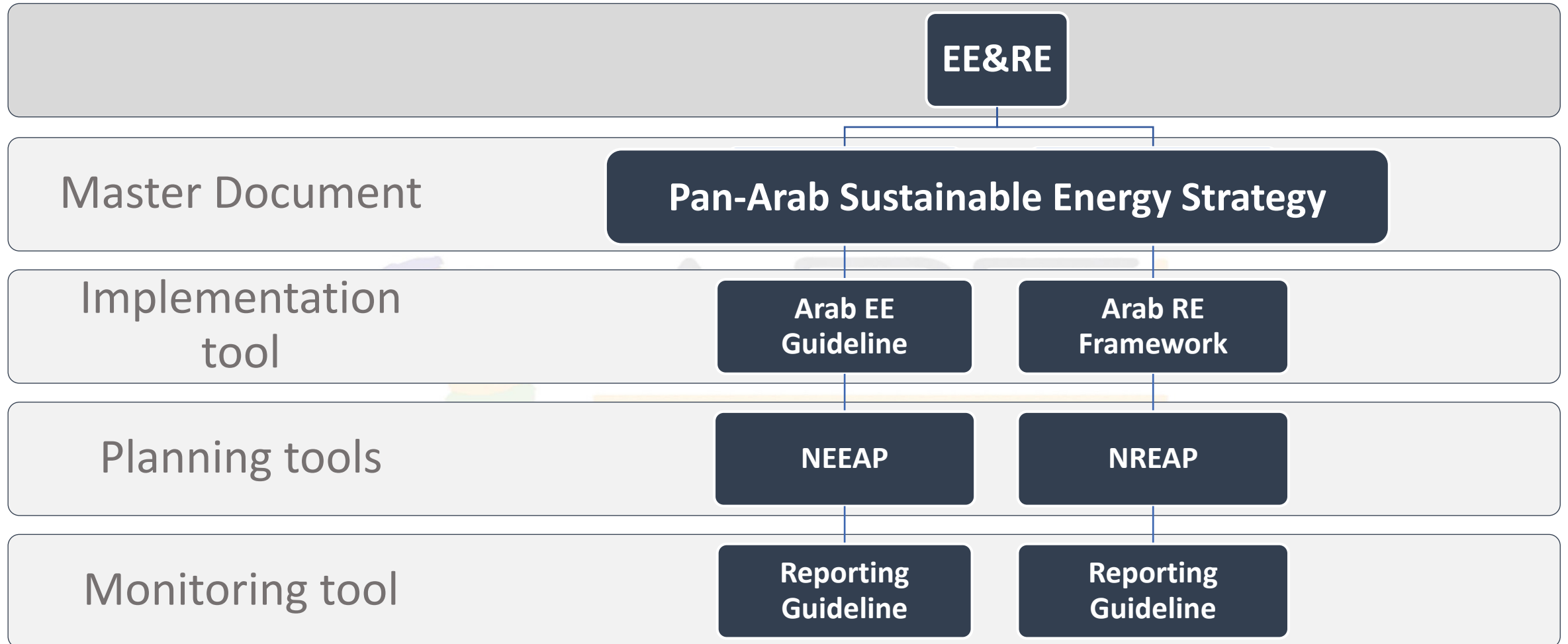
Investment Promotion

### **Sustainable Energy Projects Assessment**

Financial and Technical Assessment

Social and Economic Impact Assessment

## Policy Reform and Regional Programs



## Technical assistance/ NEAAPs

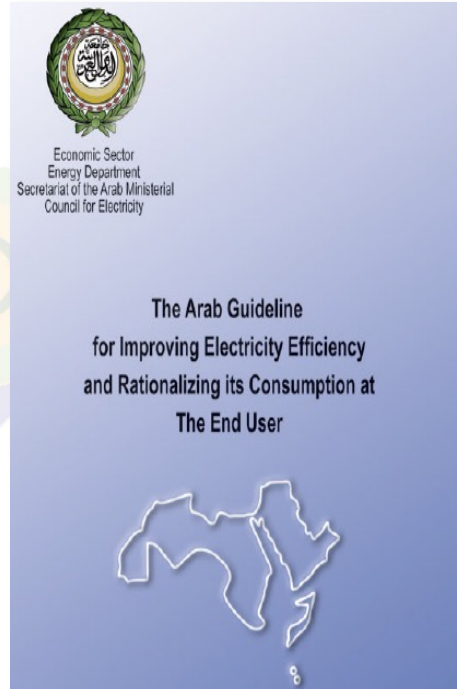
- **Supporting** Member States in the **drafting and implementation** of their NEEAPs
- Introducing a **NEEAP template** for Member States
- **Training MS officials** on EE planning, monitoring and evaluation of EE measures
- RCREEE Monitoring and reporting on **NEEAP's progress** in the region

### Best practices to develop a National Energy Efficiency Action Plan (NEEAP)

Methodology



**RCREEE**  
Regional Center for Renewable Energy and Energy Efficiency  
المركز الإقليمي للطاقة المتجددة وكفاءة الطاقة



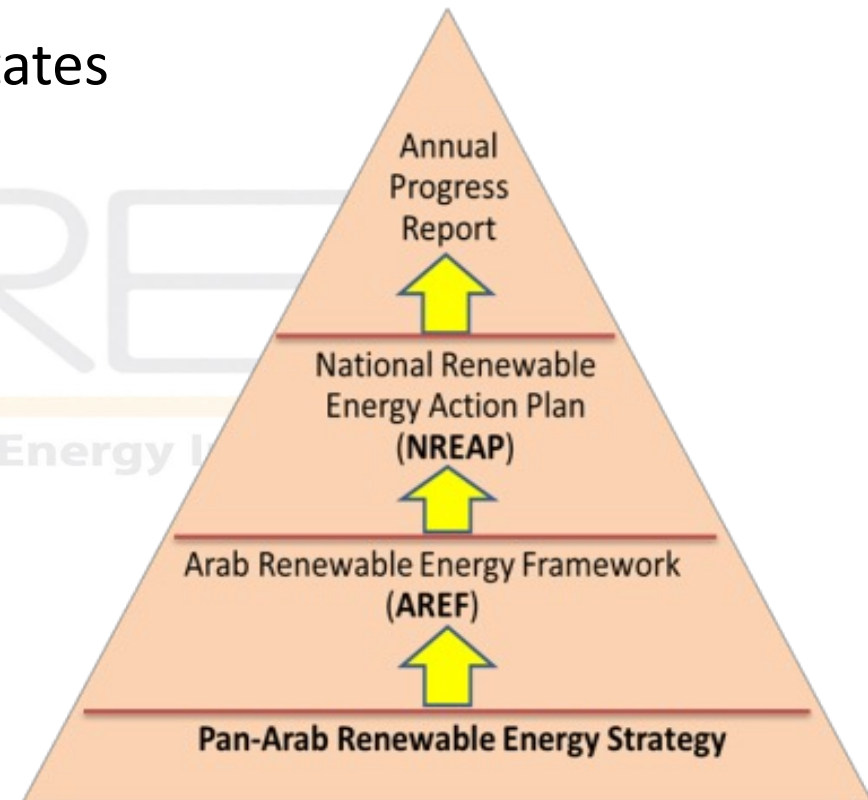
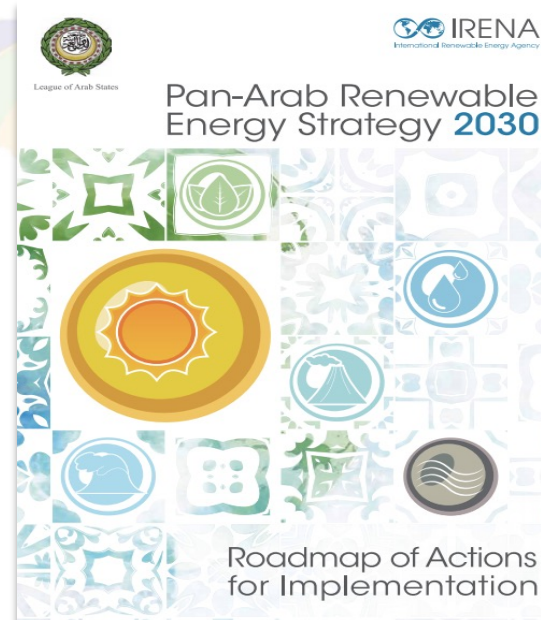
### A GUIDE TO MONITORING AND EVALUATION OF ENERGY EFFICIENCY MEASURES



**RCREEE**  
Regional Center for Renewable Energy and Energy Efficiency  
المركز الإقليمي للطاقة المتجددة وكفاءة الطاقة

## Technical assistance/NREAP

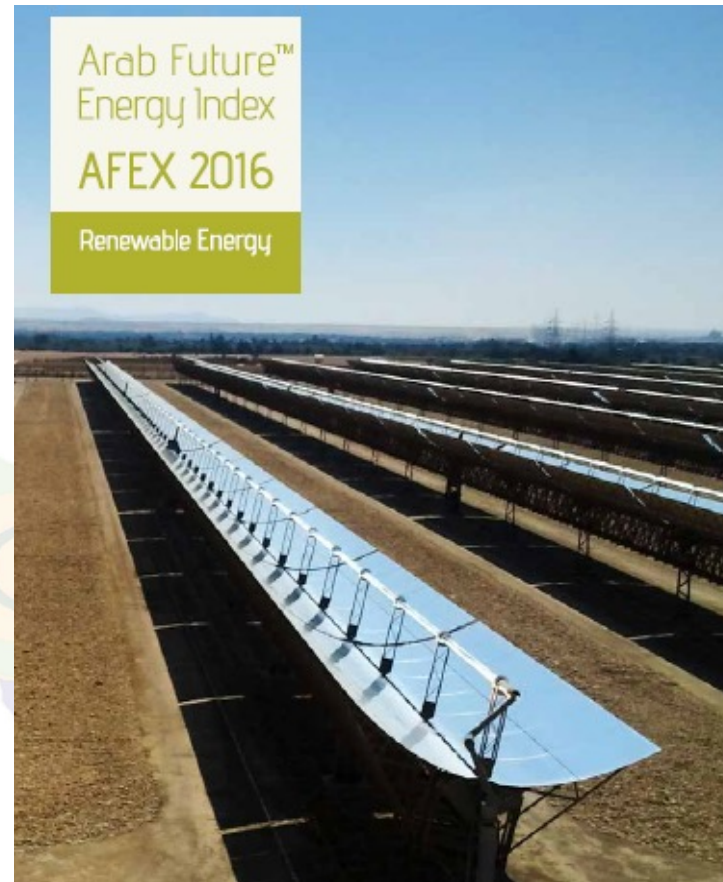
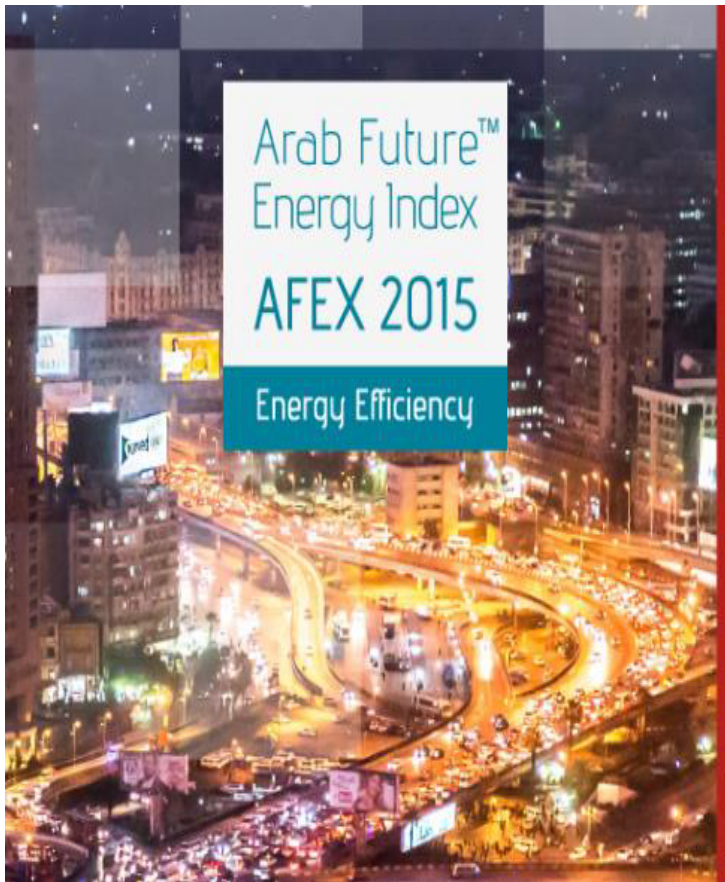
- Supporting Arab Countries in developing their **national RE planning, reporting and evaluation in line with the Arab Renewable Energy Strategy**
- Introducing a **NREAP template**
- Providing **local and regional training** to Member States





2030 ~ 300 GW

## Arab Future Energy Index RE



### AFEX – RE

Market Structure

Policy Framework

Institutional Capacity

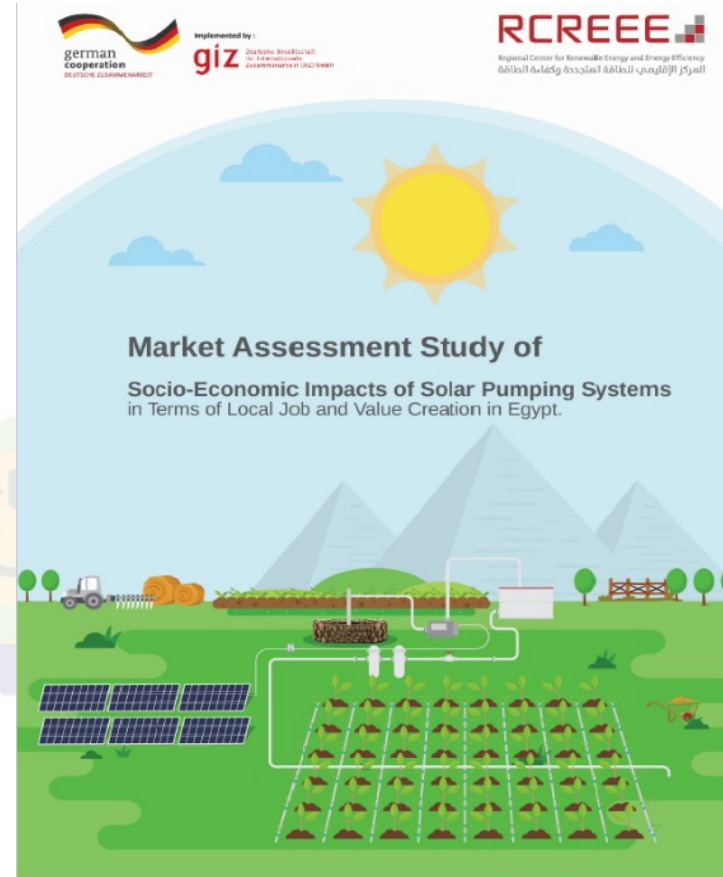
Finance and  
Investment Climate

**Progress Towards Sustainable Energy Development**

## Private Investments' Promotion

### ASSESSMENT OF THE STATUS OF SOLAR PV IN YEMEN

World Bank Project: Republic of Yemen  
Restoring and Expanding Energy Access



## Market Assessment Studies

Energy Initiative

## Technical Assistance



- Contribute to **enhancing energy security** of beneficiary countries while fostering their **transition to low carbon economy**, thereby contributing to more stable, **efficient, competitive and climate-resilient** socioeconomic contexts.



• The massive deployment of renewable energy and energy efficiency measures in building and appliances' sectors in the Southern Neighbourhood region accelerates the clean energy transition.



• Public awareness on energy's major stakes and challenges increases, thereby fostering public and private sectors' involvement towards more energy efficient buildings and appliances sectors



Algeria



Egypt



Jordan



Lebanon



Libya



Morocco



Palestine



Tunisia

## Technical Assistance

Policy Dialogue and Knowledge Management on Low Emissions Development Strategies in the MENA Region- **DIAPOL-CE**

**Objective:** Support LAS- Energy Department to harmonize ASES development and implementation. Improving the regional governance mechanism of LAS- Energy Department in particular regarding planning, benchmarking, monitoring, and data availability in the energy sector. Supports regional initiatives to align climate and energy action of LAS bodies and initiatives.

- **Funding Resources:** Grant Agreement BMU/GIZ
- **Target countries:** All Arab countries
- **Duration:** 2017-2022 **Partners:** LAS/GIZ

## Technical Assistance

The Solar Heating Arab Mark and Certification Initiative (SHAMCI) is the first Arab certification scheme for solar thermal products and services in the Arab region.

The project provides **a regional industrial and regulatory compliance framework for policy makers, industrial sector, and end-consumers.**

Inspired by the Solar Keymark, SHAMCI is built around specific needs of Arab states in the MENA Region. The project promotes adopting accreditation and quality systems across the Arab region.



Solar Heating Arab Mark and Certification Initiative (SHAMCI) ©



Strategic partners

## Renewable Energy & Energy Efficiency Investments Promotion



### **Green Economy Financing Facility**

- Provides finance and advice for private sector businesses
- Supports Egypt's green economy transition with €140 million of financing for energy efficiency and small-scale renewable energy investments
- Technical support to develop a green investment project
- Businesses receive a partial grant

### **Energy Management Services**

- Provides capacity building to the Banque du Caire on energy assessment procedures and classifications
- Provides energy assessments to industries
- Provides help-desk support to interested parties

### **Support for the establishment of Industrial Energy Efficiency (IEE) Fund**

- Setting up the fund
- Actively engage in identifying interested project proponents
- Administering the procedures for project finance
- Monitoring, measurement and verification of energy savings

## Active Turbine Management Program (ATMP)

Wind energy generation plays an important role in the reduction of GHG emissions. However, wind energy developments require substantial infrastructure to be placed across a landscape and where these turbines are inappropriately placed or operated without supervision, they may have a negative effect on birds.

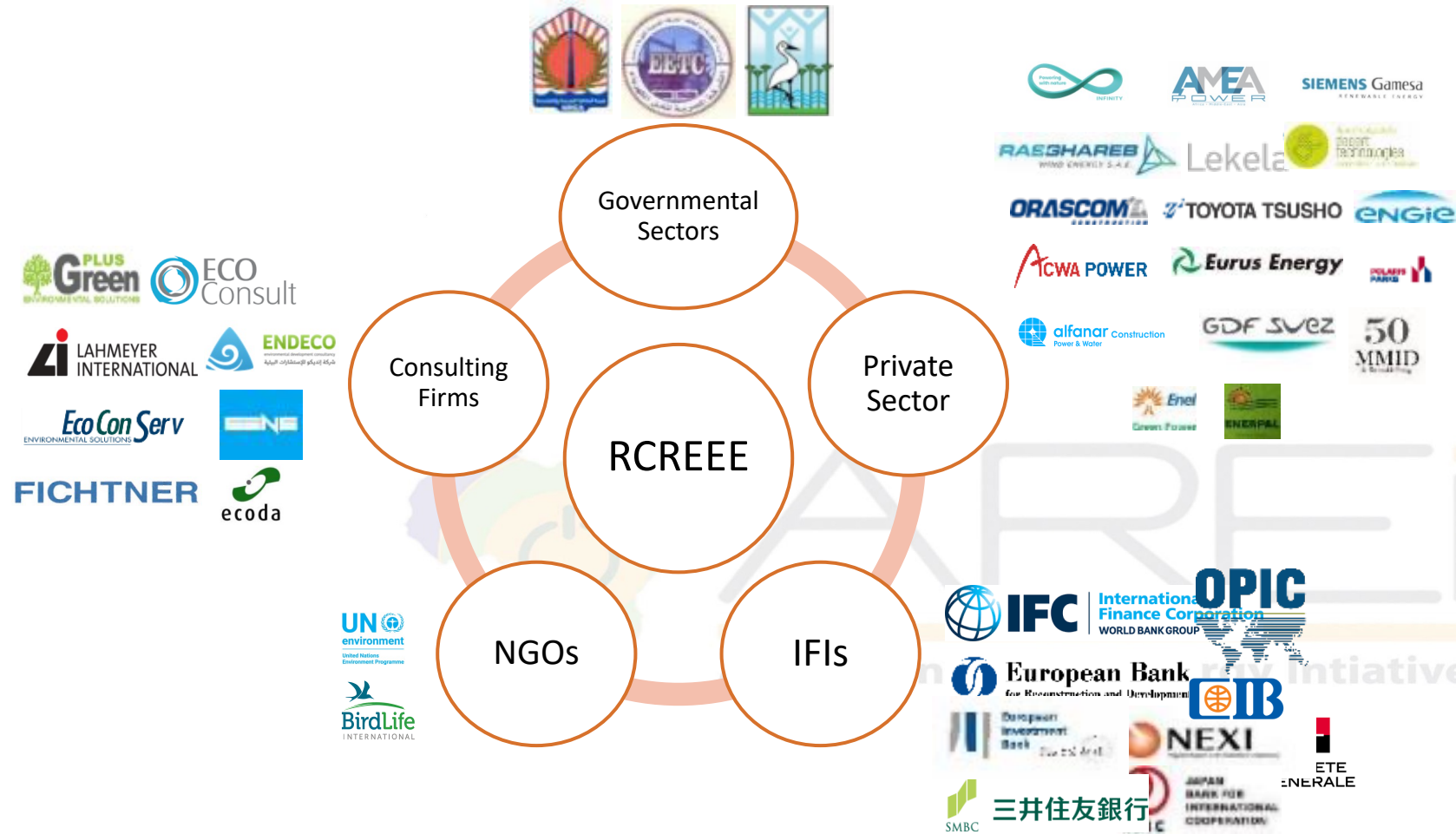
To mitigate environmental and biodiversity risks while harnessing the benefits of wind energy potential in Egypt, RCREEE initiated the ATMP in 2015 to determine the optimum wind turbines operations periods during the heavy bird migratory seasons. The project falls into one of the heaviest bird migration routes of autumn and spring seasons (Rift Valley / Red Sea flyway ).

## Active Turbine Management Program

The Regional Center for Renewable Energy and Energy Efficiency (RCREEE), Egyptian Electricity Transmission Company (EETC), Egyptian Environmental Affairs Agency (EEAA) and New and Renewable Energy Authority (NREA) have signed on 15<sup>th</sup> of December 2015 a Protocol titled “Executive Framework for Strategic Cumulative Environmental and Social Impact Assessment (SESA) & Program of Ornithological Monitoring and Active Turbine Management Program (ATMP) for Wind Energy Developments in the Gulf of Suez.







## Innovative Strategic Framework in Egypt

## Active Turbine Management Program (ATMP)

The program is divided into 3 main sub-programs; the Bird Monitoring Program, the Shutdown on Demand Program and the Fatality Monitoring Program that are pertinent for all Wind Power Plant Private Investments in the Gulf of Suez region.

Throughout the application of ATMP program, RCREEE committed to train **200** young professionals on bird monitoring and observing in wind farms.

**35%** of the trained observers are female



## Pan Arab Certified Energy Management Professional (PA-CEMP) ©

RCREEE in collaboration with the Secretariat (Energy Department – League of Arab States) of the Arab Ministerial Council of Electricity developed PA-CEMP as a standardized in-depth professional certification program for Energy Managers tailored for the Arab region.

Raise the professional standards of the Arab energy managers, and help identifying individuals with the required acceptable knowledge of the principles and practices of energy management related disciplines.



## Pan Arab Certified Energy Management Professional (PA-CEMP) ©

- ≡ Since November 2017, PA-CEMP program was implemented in 4 countries.
- ≡ More than 1500 applications received from all over the Arab region.
- ≡ 50 PA-CEMP certification rounds held across different Arab cities.
- ≡ 20 PA-CEMP certification rounds organized in online basis during the COVID-19 pandemic.



## Conclusion

- ❑ RCREEE is in support of the elaboration of energy policies, energy action plans, national strategies, reinforcing capacities, promoting investment to accelerate a sustainable regional energy transition
- ❑ RCREEE is open to partner enablers, financiers, international and national institutions, academia, research and development and develop cooperation with countries and regional centers in Africa.

# Thank you

**Nadia Chioukh**

**Regional Center for Renewable Energy and Energy  
Efficiency (RCREEE)**

Hydro Power Building (7<sup>th</sup> Floor)  
Block 11 - Piece 15, Melsa District  
Ard El Golf, Nasr City, Cairo, Egypt

[Nadia.Chioukh@rcreee.org](mailto:Nadia.Chioukh@rcreee.org)



**RCREEE** 

Regional Center for Renewable Energy and Energy Efficiency  
المركز الإقليمي للطاقة المتجددة وكفاءة الطاقة